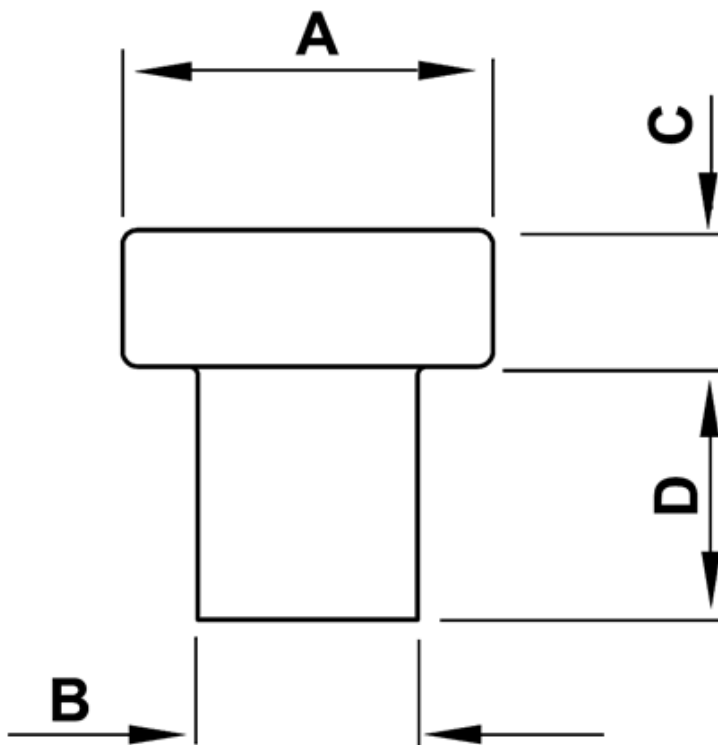


FP-0960 - Push-in feet



Details:

- **Material: see table**
- **Color: black**
- Working temperature (PVC): -25°C to +60°C
- Working temperature (LDPE): -30°C to +60°C

Part No.	A	B	C	D	Material	Standard pack
	[mm]					[pcs]
2345CA01	Ø8.0	Ø6.0	2.0	10.0	Soft PVC	1000