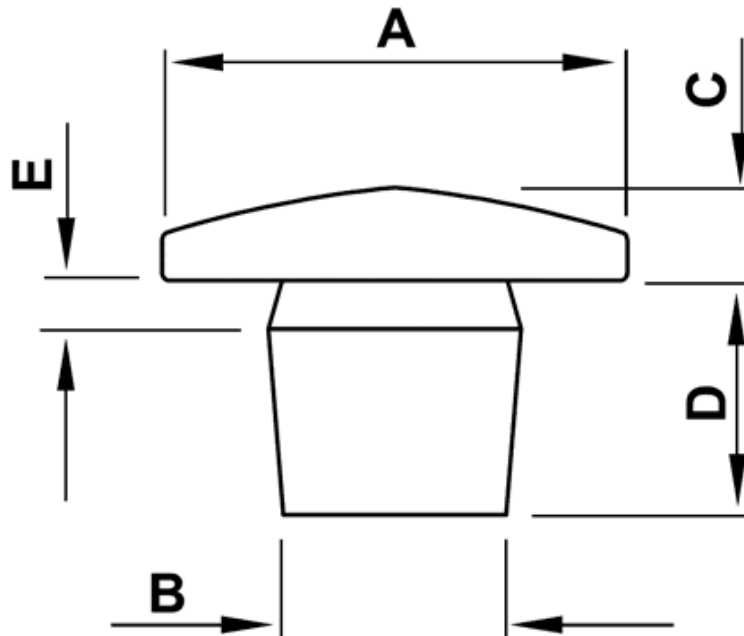


FP-5214 - Push-in feet



Details:

- **Material: TPE, working temperature: -28°C do +90°C**
- **Material: PVC, working temperature: -25°C do +60°C**
- **Color: black**
- Material available on special order: TPE, working temperature up to +130°C
- Standard pack: 2500 pcs

Part No.	A	B	C	D	E	Material	Standard pack
	[mm]						[pcs]
4808PS01	13.5	6.0	2.8	6.0	1.0	TPE	2500