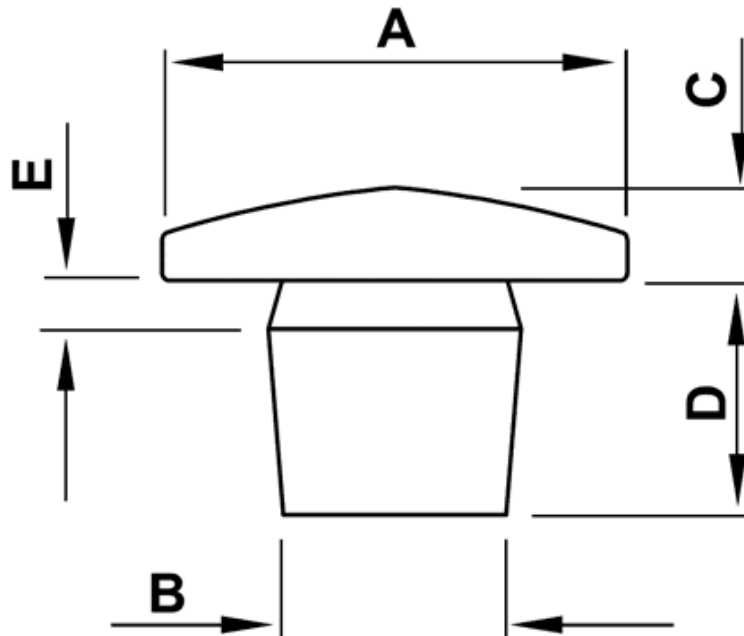


FP-5214 - Push-in feet



Details:

- **Material: TPE, working temperature: -28°C do +90°C**
- **Material: PVC, working temperature: -25°C do +60°C**
- **Color: black**
- Material available on special order: TPE, working temperature up to +130°C
- Standard pack: 2500 pcs

| Part No. | A    | B   | C   | D   | E   | Material | Standard pack |
|----------|------|-----|-----|-----|-----|----------|---------------|
|          | [mm] |     |     |     |     |          | [pcs]         |
| 5214PS01 | 12.0 | 6.0 | 2.8 | 6.0 | 1.0 | TPE      | 2500          |